

Lecture 9

Git Tools: SourceTree

**Sign in on the
attendance
sheet!**



SourceTree

What we've done so far

- Used Git in the terminal
- Used GitHub to work with others

```
2012-09-11 (HEAD, master) ridu juurde (Laas Toom)
2012-09-11 (s4) staging uus konf (Laas Toom)
2012-09-11 Merge branch 'master' into staging (Laas Toom)

def93 2012-09-11 (s3) masteri confiparandus (Laas Toom)
43a8b 2012-09-11 (s2) Merge branch 'master' into staging (Laas Toom)

e67c45a 2012-09-11 (s2) parandus kolmandasse (Laas Toom)
ae180c6 2012-09-11 Merge branch 'master' into staging (Laas Toom)

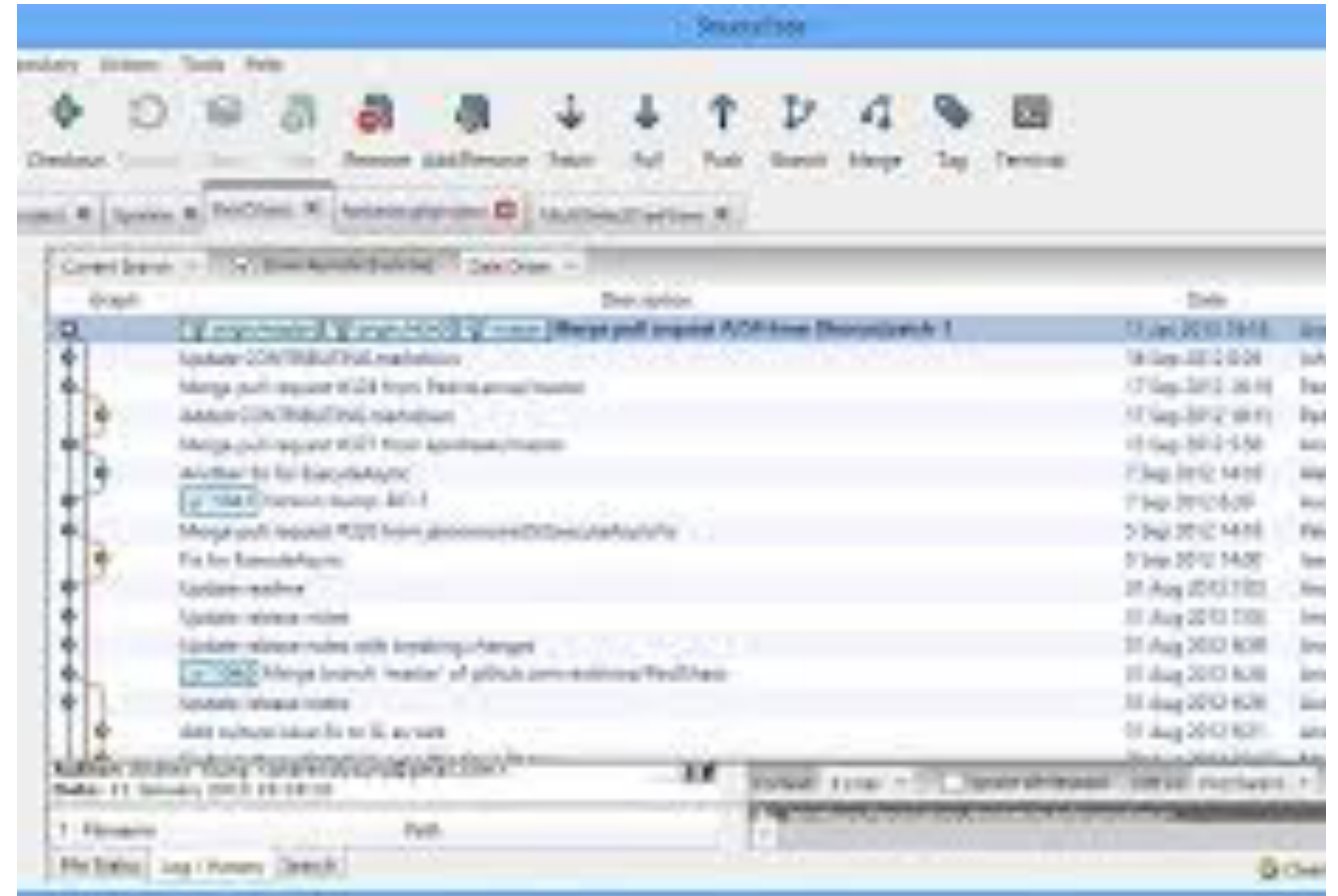
dc7db02 2012-09-11 (s1) kolmas fail masterisse (Laas Toom)
f616952 2012-09-11 (s1) Staging 2 config (Laas Toom)
2af9eaa 2012-09-11 staging_conf (Laas Toom)

7c15756 2012-09-11 (initial) initial (Laas Toom)
```



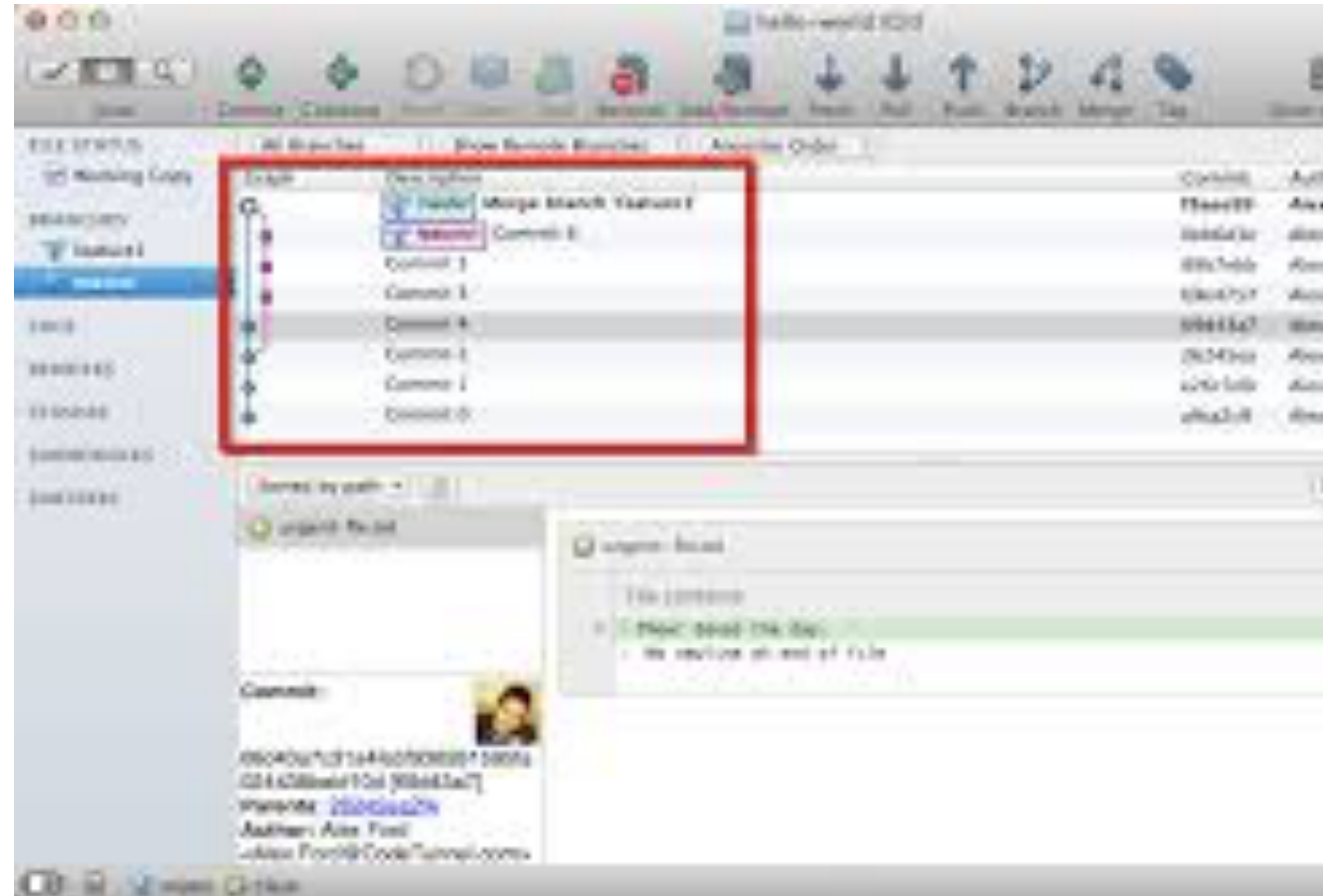
SourceTree's powers

- Almost Everything in the terminal can be done just as easily as in SourceTree
- The UI is often more intuitive
- SourceTree shows you things like graphs and diffs along the way without you having to ask



Git in SourceTree

- Shown by default:
 - Git branch
 - Git log –oneline –pretty –decorate –graph
- Different views
 - Staging area & git log
 - Branches
- Lots of power in SourceTree
- Good if you can't remember all the commands



Demo

<http://www.sourcetreeapp.com/>

Questions?

- Ask us about:
 - anything you don't understand how to do in So
 - anything in Git so far
- Git, GitHub, and SourceTree are all widely used tools and Google and Stack Overflow have lots of answers as well

